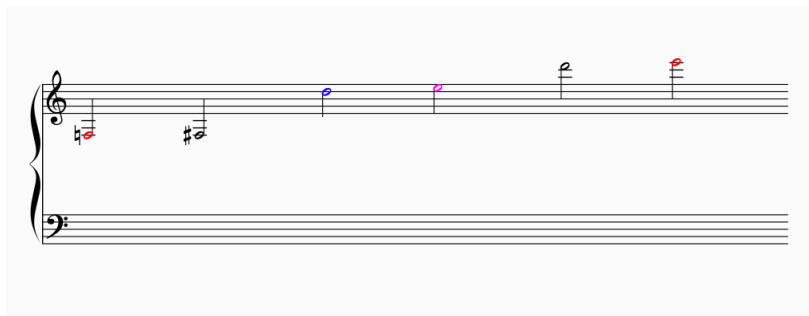


THE SWINGLES

Vocal Range Chart

Federica - Soprano 1



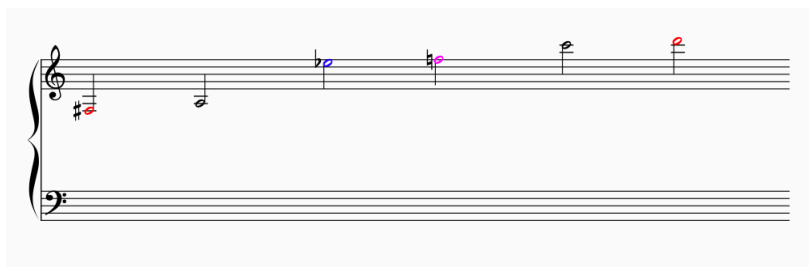
Federica has the bladiest, most pointed voice of the three upper voices. She has strong high notes as well as a strong belt and a beautiful pop solo voice.

Tokyo Sunrise - <https://youtu.be/TgG7P0fVkyo>

Libertango - <https://youtu.be/uN4OvPrUmrC>

Air on the G String - <https://youtu.be/03Gn4loM7As>

Midge - Soprano 2



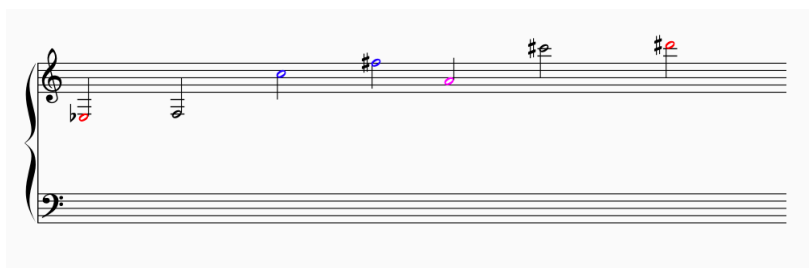
Midge has the lightest voice of the three upper voices, much breathier than Federica. She also has a strong belt, as well as a strong mix belt. She doesn't mind high, sustained parts. Generally, her tone is most useful in Sop 1 or Sop 2, but definitely can (and does) sing alto. Strong soloist.

Goodbye England - <https://youtu.be/mJgZQ1h4feli>

Footprints - https://youtu.be/nQp_eWGYrgw

Air on the G String - <https://youtu.be/03Gn4loM7As>

Jo - Alto



Jo has the warmest voice of the three upper voices. Of the three, she is most comfortable in the lower range, but also frequently sings high soprano above the staff. She is strong all-around and a strong soloist.

Blackbird - <https://youtu.be/QMLlp4nBujg>

Nana - <https://youtu.be/Lf3LFh7dLZU?t=88>

Badinerie - <https://youtu.be/M4m2EMGv1Fs>

All three of our Swingle ladies can sing Soprano or Alto. We tend to switch them around based on the tones of their voices and what the piece requires. Federica tends to have a bladier tone, while Midge's is breathier, and Jo has a smooth warm tone.



Range extremities
Only write here if necessary



Comfortable Range

Key



Break/Passaggi
Uncomfortable to sing there for long periods of time



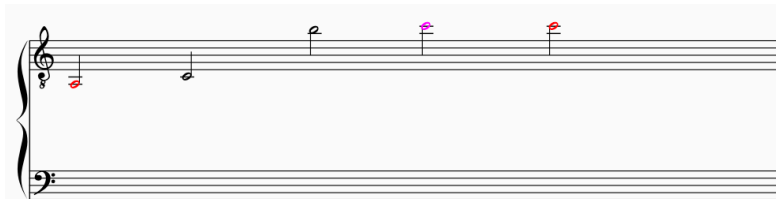
Belt Extremity
Cannot belt higher than indicated note



THE SWINGLES

Vocal Range Chart

Oli - Tenor 1



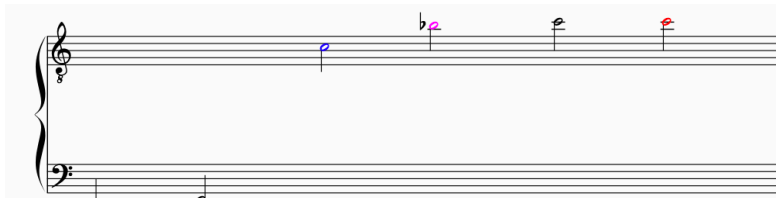
Oli is our tenor 1. When balancing a chord, anywhere between C4 and A4 he can be quite pingy. Strong soloist with theatrical background.

Blackbird - <https://youtu.be/QMLIp4nBujg>

Life on Mars - <https://youtu.be/mXD6yyHLZog>

Red Rain - <https://youtu.be/CgvAfk37hhA>

Jon - Tenor 2



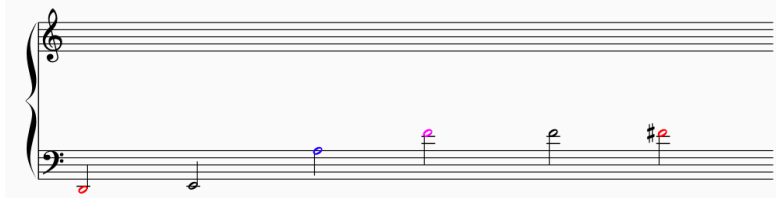
Jon is our tenor 2 with a very wide range. Occasionally, Oli & Jon will swap if the piece requires different tones. Strong soloist, does a lot of improvisation in the current show. Also occasionally does auxiliary or main vocal percussion.

Hallelujah... - <https://youtu.be/DDWFSOEi0eE>

You Don't Speak for Me - https://youtu.be/_QSvPvsmK3k

Go Your Own Way - <https://youtu.be/xXrN3B4JijU?t=75>

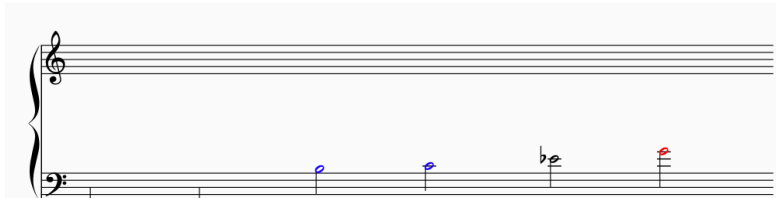
Jamie - Baritone



Jamie is our newest member and baritone. He is our primary vocal percussionist. He struggles when his part hovers around G3 & A3 the whole time.

America - <https://youtu.be/VofPJ5Xgi2c?t=115>

Edward - Bass



Ed is our low bass. He is also great at improvisation, a strong soloist, songwriter, and does auxiliary vocal percussion.

Blue Above the Clouds - <https://youtu.be/a7MUwPYv8XM>

15 Step - <https://youtu.be/j0HcXBghSQ>

#CLYM - <https://youtu.be/VjRLrBAXAMc>



Range extremities
Only write here if necessary



Comfortable Range

Key



Break/Passaggi
Uncomfortable to sing there for long periods of time



Belt Extremity
Cannot belt higher than indicated note

